

HP Scitex FB750 Printer

Grow your business with rigid applications



Boost your profit potential with more versatility

- Expand into high-value applications managing boards up to 120 x 98 inches (302 x 250 cm)
- Print on almost any rigid/flexible media¹ up to 64 mm (2.5 in); HP inks for high durability and flexibility
- Get into specialties, attract new customers; do more—white ink,² double-sided, matte/gloss, textured effects
- Improved image quality, improved high density photo print modes and high white opacity

Gain high productivity and ease of use

- Print indoor quality productively—up to 21.1 m²/hr (227 ft²/hr),³ and manage long runs with 3-liter HP ink supplies
- Efficient workflow lets you load, print, and collect media simultaneously
- Save time with multi-image, multi-size capability on up to 6 sheets at the same time and true full bleed
- New tabletop roll holder design for flexible substrates enables easy, fast, and efficient short-run printing

Count on a true workhorse that's easy and compact

- Be print ready—rely on HP engineering for proven results and the backing of a partner you can trust
- Gain robust performance, sturdy media advance system, and heavy-duty tables—all in a space-saving design
- High uptime with automatic maintenance, printhead servicing, and HP Print Care maintenance assistance
- Safe work space with fully enclosed printer; HP UV-curable inks do not require special ventilation⁴

For more information, please visit:
hp.com/go/ScitexFB750

¹ Flexible media printing with an optional HP Scitex FB750 Roll Printing Kit. Printing performance may vary depending on media.

² Use of white ink requires a separate purchase of the HP Scitex FB5xx/FB7xx White Upgrade Kit.

³ Print speed achieved in indoor signage print mode.

⁴ Special ventilation equipment (air filtration) is not required to meet U.S. OSHA requirements. Special ventilation equipment installation is at the discretion of the customer—see the Site Preparation Guide for details. Customers should consult state and local requirements and regulations.



Retail POP/POS

Create hundreds of different unique retail applications. Expand your offering into multisubstrate campaigns, combining rigid and flexible media.



Standing displays

Flexible and high durability inks enable endless design possibilities for Free Standing Display Units (FSDUs). Print on extremely thick materials—up to 6.4 cm (2.5 inches).



Specialties

Produce high-saturation backlights, textured effects (matte/gloss, textures), and metallized effects with the certified Color-Logic Solution⁵ for high-value applications.



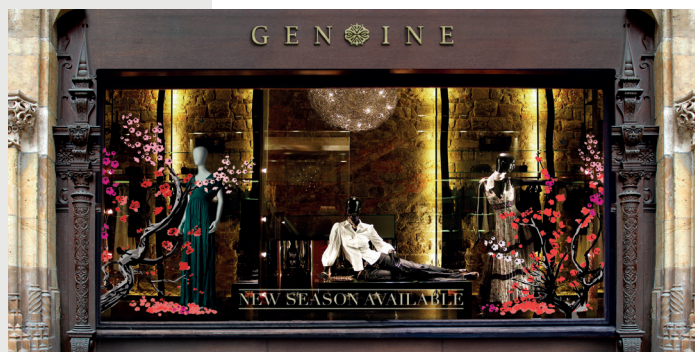
Outdoor signage

Deliver high durability without lamination, for both temporary and long-term outdoor displays up to 3 years.⁶



Fine art and decoration

Expand into new markets such as hotel, restaurant, and corporate decoration. Print on a wide range of substrates such as aluminum, wood, glass, mirror, or acrylic.



Window graphics

Use the white ink inline system to deliver high white opacity applications on virtually any transparent, translucent, or colored materials.⁵

⁵ Use of the Color-Logic Solution and white ink inline system require a separate purchase of the HP Scitex FB5xx/FB7xx White Upgrade Kit.

⁶ Image permanence estimate by HP Image Permanence Lab. Display permanence tested August 2010 according to SAE J2527 using HP FB250 and FB251 Scitex Inks on a range of rigid media with up to 4 years display permanence achieved using color inks on HP Permanent Gloss Adhesive Vinyl; in a vertical display orientation in simulated nominal outdoor display conditions for select high and low climates, including exposure to direct sunlight and water; performance varies based on the color/white ink overlay combination; in addition performance may vary as environmental conditions change. For the other commercially-available media tested: actual results may vary, this information is provided for reference purposes only. For more information, see HPLFMedia.com.

Continuous workflow

Load, print, and collect media simultaneously, experience true productivity.



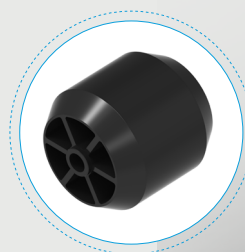
Tabletop roll holder

Print flexible one-offs right on the spot. Start printing in seconds with the new tabletop roll holder accessory.



New rollers

Prevent damage to media edges with new roller design that enables easy and safe media loading.



Folding tables

Standard and extension folding tables fit easily in your shop, minimum space required.



Technical specifications

Printing	Printing modes	Billboard: Up to 85 m ² /hr (915 ft ² /hr) Express: Up to 43.6 m ² /hr (469 ft ² /hr) Outdoor Signage: Up to 35.3 m ² /hr (380 ft ² /hr) Indoor Signage: Up to 21.1 m ² /hr (227 ft ² /hr) Photo: Up to 10.3 m ² /hr (110 ft ² /hr)
	White ink printing overcoat or undercoat ⁷	Outdoor Signage Plus: Up to 10.4 m ² /hr (112 ft ² /hr) Indoor Signage: Up to 9.9 m ² /hr (106 ft ² /hr) Photo: Up to 4.7 m ² /hr (51 ft ² /hr)
	Print resolution	Up to 1200 x 600 dpi
	Technology	Piezoelectric inkjet, UV-curable inks
	Ink types	UV-curable, pigment-based ink
	Ink cartridge colors	Cyan, magenta, yellow, black, light cyan, light magenta, white (optional)
	Ink cartridge size	3 liter (cyan, magenta, yellow, black, light cyan, light magenta) / 2 liter (white)
Media	Handling	Flatbed, sheet feed, and roll feed with optional HP Scitex FB750 Roll Printing Kit. Vacuum belt media drive for easy loading and accurate media advance
	Rigid media support	Standard input and output tables support rigid materials up to 250 x 122 cm (98.4 x 48 in). The optional HP Scitex FB750 Extension Tables support rigid materials up to 250 x 305 cm (98.4 x 120 in). Maximum sheet weight 68 kg (150 lb)
	Roll-fed media support	Optional HP Scitex FB750 Roll Printing Kit supports flexible media up to 250 cm (98.4 in) wide, with a roll diameter of up to 23 cm (9 in), up to 81 kg (180 lb) in weight
	Thickness	Up to 64 mm (2.5 in)
Applications	POP/POS, Displays, Exterior signage, Exhibition and event graphics, Interior decoration, Directional rigid signage, Outdoor furniture, Short-run packaging, 3D displays	
Connectivity	Interfaces (standard)	Fast Ethernet (100 Base-T) with TCP/IP protocol and DHCP support
UV energy source	Dual shuttered UV lamps. Independent user-selectable control of shutter aperture and of three lamp power levels	
Dimensions (w x d x h)	Printer	411 X 126 x 153 cm (162 x 50 x 60 in)
	Printer with standard tables	411 x 254 x 153 cm (162 x 100 x 60 in)
	Shipping	435 x 170 x 183 cm (171 x 67 x 72 in)
Weight	Printer	814 kg (1793 lb)
	Printer with tables	865 kg (1905 lb)
	Shipping	1223 kg (2695 lb)
What's in the box	HP Scitex FB750 Printer; standard input and output tables; HP webcam with 5 m (16 ft) USB cable; foot switch; cleaning kit; user documentation; site preparation guide; power cord; auxiliary power supply; installation kit	
Environmental ranges	Operating temperature	20 to 30°C (68 to 85°F)
	Operating humidity	20 to 80% RH, non-condensing (with synthetic media 40% min recommended to avoid static electricity; with paper-based media 60% max recommended to avoid buckling)
Power	Consumption	1900 watts (printing); 2600 watts (maximum)
	Requirements	Input voltage: 200 to 240 VAC, single-phase, 50/60 Hz, 12 A max
Certification	Safety	Compliant with ITE requirements including USA and Canada (UL, cUL); EU (CE); EAC; Australia (ACMA); New Zealand (RSM)
	Electromagnetic	Compliant with Class A ITE requirements, including: USA (FCC rules), Canada (ICES), EU (EMC Directive), Australia (ACMA), New Zealand (RSM)
	Environmental	WEEE, EU RoHS, China RoHS, REACH
Warranty	One-year limited warranty	

Ordering information

Product	L1Q42A	HP Scitex FB750 Printer
Accessories	CQ118A	HP Scitex FB5xx/7xx White Upgrade Kit
	L6E81A	HP Scitex FB750 Roll Printing Kit
	L5D71A	HP Scitex FB750 Extension Tables
	D9Z41A	HP Scitex ONYX Thrive 211 RIP Software
	L5E74A	HP Scitex Caldera Grand RIP v10
Original HP ink cartridges	G0Y93A	HP FB794 3-liter Cyan Scitex Ink Cartridge
	G0Y94A	HP FB794 3-liter Magenta Scitex Ink Cartridge
	G0Y95A	HP FB794 3-liter Yellow Scitex Ink Cartridge
	G0Y96A	HP FB794 3-liter Black Scitex Ink Cartridge
	G0Y97A	HP FB794 3-liter Light Cyan Scitex Ink Cartridge
	G0Y98A	HP FB794 3-liter Light Magenta Scitex Ink Cartridge
	CQ123A	HP FB251 2-liter White Scitex Ink Cartridge
Original HP maintenance supplies	CH122A	HP 1-liter UV Printhead Flush
	CH231A	HP UV Replacement Bulb
	CQ121A	HP Scitex FB5xx/7xx/950 Printer Cleaning Kit
Service and support	HA151AC-L1Q42A	HP Full Coverage Maintenance Support Contract
	HK965AC-L1Q42A	HP Shared Maintenance Hardware Support Contract
	HK707AC-L1Q42A	HP Parts and Remote Hardware Support Contract
	L1Q41-67022/M6Q81	HP Scitex FB550/750 Standard Uptime Kit
	L1Q41-67023/M6Q82	HP Scitex FB550/750 Extended/Reseller Kit

⁷ Use of white ink requires a separate purchase of the HP Scitex FB5xx/7xx White Upgrade Kit.

Our solution partners:



บริษัท บีพีเอส ยูไนเต็ด จำกัด

213 หมู่ 1 ถนนสุขสวัสดิ์ ตำบลปากคลองบางปลากด อำเภอบางพลี จังหวัดสมุทรปราการ 10290
T. 0-2816-3888, 0-2816-3999, 0-91818-2988-9 F. 0-2816-3838-9
www.bpsunited.com, www.facebook.com/bpsunited

