

HP Designjet L26500 Printer Series

Expand your offerings with fast
and easy turnarounds



Unrivaled application versatility¹.

- Print on a broad range of materials, including vinyl, textiles², paper, film, and low-cost uncoated options.
- Seize your share of the growing temporary textiles market with the ability to print on a broader range of textiles².
- Meet client needs for sharp, vivid indoor and outdoor signs—from retail ad campaigns to interior decoration.
- Create long-lasting outdoor signage with better durability than eco-solvent inks³.

Easy, convenient printing.

- Enjoy an extremely short time to delivery—prints are dry and ready to finish or use immediately.
- Make double-sided prints⁴ with automated registration across sides that move immediately to finishing.
- Take advantage of increased uptime that comes from automatic, reliable, low-maintenance printing.
- Use proactive alerts and accurate cost reporting to minimize interruptions and provide price quotes.

Win new business from environment-minded customers.

- Attract environmentally conscious customers using HP Latex Inks and recyclable HP printing materials⁵.
- Improve the work environment—no special ventilation⁶, no hazard warning label—unlike most eco-solvent inks.
- Return and recycle supplies for free⁷ and dramatically improve ink efficiency⁸.
- Choose a printing system that is an industry leader in environmental certifications and awards.

For more information, please visit:

www.hp.com/go/DesignjetL26500

Become an expert with HP Latex Printing Technology:

www.hp.com/go/hplatexuniversity

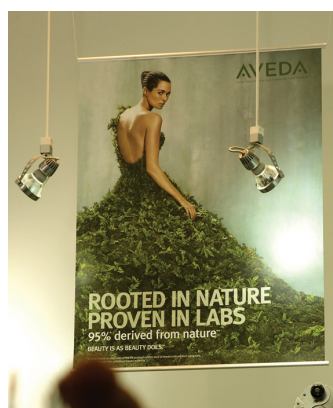
HP Designjet L26500 Printer Series



HP Latex Printing Technologies

HP Latex Inks are water-based inks that combine the best characteristics of eco-solvent inks and water-based inks. You can obtain the outdoor durability and versatility on low-cost, uncoated papers that you would traditionally associate with eco-solvent inks, together with the odorless prints⁹, low maintenance, and environmental advantages you get from water-based inks.

HP Latex Inks are completely cured inside the printer to form a durable film on the print medium. Prints come off dry so you can move right on to lamination, finishing, shipping, or display.



Point of Purchase Posters

Reduce costs without compromising quality

- Print on low-cost uncoated papers – With HP Latex Inks, you can print on uncoated papers, and reduce your media costs by up to 30%. Solvent printers require more expensive coated papers to achieve the same results.



Light boxes

Deliver vibrant, saturated colors at high productivity

- Achieve excellent image quality – Produce high-resolution prints up to 1200 dpi, with dense, saturated colors that stand up to close inspection.



Temporary Textiles¹²

Complement your business without losing versatility

- With HP Latex Inks, you can print on uncoated fabrics with excellent image sharpness, and save up to 30% on substrate costs. Solvent printers require more expensive coated fabrics to achieve the same image-quality results.



Wallcoverings

Discover a new market opportunity

- Eliminate concerns about odor—prints produced with HP Latex Inks are odorless⁹ even immediately after printing, making them ideal for residential, office, hospitality, healthcare, or other environments with similar needs.



HP Designjet L26500 Printer Series

Vast improvement in double-sided printing.

- The double-sided capability⁴ allows you to print double-sided banners with minimal operator intervention. The HP Optical Media Advance Sensor (OMAS) controls registration automatically.
- You can also save time—no need to rewind the roll between sides.

More textiles and higher quality.

- 155-cm (61-in) rolls fully supported. Now you have access to many more of the fabric rolls available in the market.
- Maximize the variety of media you can handle, including soft materials previously too light to load. Print unlined flag fabrics with the Platen Cover accessory (B2W90A)
- Even higher image quality with the new front tension system and edge holders.



Vehicle wraps and graphics

Cut turnaround times, access high-value market segments

- You can laminate right after printing – There is no need to let prints dry after printing, so you can accept urgent turnaround jobs that can command a premium price.



Outdoor and event banners

Produce images worthy of building the best brands

- See rich blacks and glossy results on self-adhesive vinyls and banners with outdoor display permanence up to three years un laminated, five years laminated¹⁰.

ECO HIGHLIGHTS

- Water-based HP Latex Inks – no special ventilation required¹, no hazard warning labels, no HAPs²
- Produce odorless prints³
- Create prints on FSC®-certified HP wall paper that are GREENGUARD Children & Schools CertifiedSM and meet AgBB criteria⁴
- Reduce your impact – print using a range of recyclable HP media, recycle all printing supplies⁵
- Eco Mark-Certified ink cartridges⁶



Trained Printing Company
HP LATEX PRINTING TECHNOLOGIES
Learn more at hp.com/ecosolutions/tpc

Please recycle large-format printing hardware and printing supplies.

Find out how at our website:

www.hp.com/ecosolutions




1) Special ventilation is not required to meet U.S. OSHA requirements on occupational exposure to VOCs from HP Latex Inks. Special ventilation equipment installation is at the discretion of the customer – no specific HP recommendation is intended. Customers should consult state and local requirements and regulations. 2) Contains no detected Hazardous Air Pollutants according to EPA Method 311. 3) Some substrates may have inherent odor. 4) HP PVC-free Wall Paper printed with HP Latex Inks is GREENGUARD Children & Schools CertifiedSM and meets AgBB criteria for health-related evaluation of VOC emissions of indoor building products. 5) Visit www.hp.com/recycle to see how to participate and for HP Planet Partners program features and availability; program may not be available in your area. 6) HP 792 Latex Designjet Ink Cartridges, certification number 11 142 004 by the Eco Mark Office of Japan Environment Association.

HP Designjet L26500 Printer Series

Technical specifications

Print speed ⁽¹⁾	Up to 22.8 m ² /hr (246 ft ² /hr)	
Media	Handling	Roll feed, take-up reel, automatic cutter (for vinyl, paper-based media, backlit polyester film, and thin banners)
	Media solutions locator	www.hp.com/go/mediasolutionslocator
	Roll size	58 to 155-cm (23 to 61-in) rolls, up to 40 kg (88 lb)
	Roll diameter	Up to 18-cm (7.1-in) outside diameter
	Thickness	Up to 0.5 mm (19.7 mil)
Printing	Printing modes ⁽¹⁾	4-pass bidirectional: 22.8 m ² /hr (246 ft ² /hr), 10-pass bidirectional: 9.0 m ² /hr (97 ft ² /hr)
	Print resolution	1200 x 1200 dpi
	Margins	Top x bottom x left x right: 5 x 5 x 5 x 5 mm (0.2 x 0.2 x 0.2 x 0.2 in)
	Printheads	6 (2 x yellow/black, 2 x cyan/light cyan, 2 x light magenta/magenta)
Dimensions (w x d x h)	Printer: 2465 x 690 x 1370 mm (97 x 27.5 x 54 in), Shipping: 2690 x 815 x 1200 mm (105.9 x 32.1 x 47.2 in)	
Weight	Printer: 202 kg (445 lb), Shipping: 291 kg (642 lb)	
What's in the box	HP Designjet L26500 Printer, printheads, printhead cleaning kit, ink maintenance kit, cleaning container, Original HP sample media, printer stand, take-up reel, loading accessory, edge holder, waste management diverter, user maintenance kit, maintenance guide, setup poster, documentation software, power cords	
Environmental ranges	Operating temperature: 15 to 30°C (59 to 86°F), Storage temperature: -25 to 55°C (-13 to 131°F) Operating humidity: 30 to 80% RH (non-condensing)	
Acoustic	Sound pressure, active: 57 dB(A), standby: 49.5 dB(A)	
Power consumption	Maximum: 4.8 kW maximum (only when warming up), Active: 2.7 kW, Powersave: 50 watts	
	Power requirements	Worldwide model: Input voltage (auto ranging): 220 to 240 VAC (-10% +6%), 50/60 Hz (+/- 3 Hz), 15 A max per power cord Japan model: Input voltage: 200 VAC (-10% +10%), 50/60 Hz (+/- 3 Hz), 15 A max per power cord
Certification	Safety	USA and Canada (CSA certified), EU (LVD and EN 60950-1 compliant), Russia (GOST), China (CCC)
	Electromagnetic	Compliant with Class A requirements, including: USA (FCC rules), Canada (ICES), EU (EMC Directive), Australia (ACMA), New Zealand (RSM), China (CCC), Japan (VCCI), Korea (KCC)
	Environmental	WEEE, EU RoHS, China RoHS, REACH, EuP, FEMP
Warranty	One-year limited hardware warranty; 8-hour, 5 days a week phone support	

Ordering information

Product	CQ869A	HP Designjet L26500 61-in Printer
	CR030A	HP Designjet L26500 61-in Japan Printer
Accessories	CV063A	HP Designjet L26500 (61-in Printer) 2-in Spindle
	CV135A	HP Designjet L26500 (61-in Printer) 3-in Spindle
	CR765A	HP Designjet 61-in Media Loading Accessory
	CQ201A	HP Designjet L2x500 User Maintenance Kit
	B2W90A	HP Designjet L26500/28500 Platen Cover
Original HP printheads	CN702A	HP 792 Yellow/Black Designjet Printhead
	CN703A	HP 792 Cyan/Light Cyan Designjet Printhead
	CN704A	HP 792 Light Magenta/Magenta Designjet Printhead
Original HP ink cartridges	CN705A	HP 792 775-ml Black Latex Designjet Ink Cartridge
	CN706A	HP 792 775-ml Cyan Latex Designjet Ink Cartridge
	CN707A	HP 792 775-ml Magenta Latex Designjet Ink Cartridge
	CN708A	HP 792 775-ml Yellow Latex Designjet Ink Cartridge
	CN709A	HP 792 775-ml Light Cyan Latex Designjet Ink Cartridge
	CN710A	HP 792 775-ml light Magenta Latex Designjet Ink Cartridge
Original HP maintenance supplies	CR278A	HP 792 Designjet Printhead Cleaning Kit
	CR279A	HP 792 Designjet Ink Maintenance Kit
	CH622A	HP 789/792 Designjet Printhead Cleaning Container
Original HP printing materials	CH003B	HP PVC-free Wall Paper – 1372 mm x 30.5 m (54 in x 100 ft)
	CR693A	HP Double-sided HDPE Reinforced Banner  - 1524 mm x 45.7 m (60 in x 150 ft)
	CG421A	HP Photo-realistic Poster Paper  - 1524 mm x 61 m (60 in x 200 ft)
	CR663A	HP Backlit Polyester Film  - 1524 mm x 30.5 m (60 in x 100 ft)
	For the entire HP Large Format Printing Materials portfolio, please see www.hp.com/go/LFprintingmaterials	
Service and support	HZ644E	HP 3 year Next business day Designjet L26500 61-in Hardware Support
	HZ645E	HP 3 year 4 hour 13x5 Designjet L26500 61-in Hardware Support
	HZ660PE	HP 1 year Post warranty Next business day Designjet L26500 61-in Hardware Support
	HZ661PE	HP 1 year Post warranty 4 hour 13x5 Designjet L26500 61-in Hardware Support

¹ The HP Designjet L26500 Printer produces an extremely broad range of both outdoor and indoor applications from a single device, which surpasses the number of different applications that traditional eco-solvent printers or water-based printers can produce.

² For best results, print on media that does not let the ink trespass onto the printer. Performance may vary depending on media. Please consult your media supplier for compatibility details.

³ Durability comparison based on testing of representative eco-solvent inks including eco-sol Max inks on Avery SA vinyl for display permanence and scratch, rub/abrasion, and chemical resistance. HP image permanence and scratch, smudge, and water resistance estimates by HP Image Permanence Lab on a range of media including HP printing materials. See www.hp.com/go/supplies/printpermanence.

⁴ For best results use media options intended for double-sided printing.

⁵ HP Large Format Media take-back program availability varies. Some recyclable HP papers can be recycled through commonly available recycling programs. Recycling programs may not exist in your area. See www.hp.com/recycle for details.

⁶ Special ventilation is not required to meet U.S. OSHA requirements on occupational exposure to VOCs from HP Latex Inks. Special ventilation equipment installation is at the discretion of the customer – no specific HP recommendation is intended. Customers should consult state and local requirements and regulations.

⁷ Visit www.hp.com/recycle to see how to participate and for HP Planet Partners program availability; program may not be available in your area. Where this program is not available, consult the Material Safety Data Sheet (MSDS) available at www.hp.com/go/ecodata to determine appropriate disposal.

⁸ Per internal HP testing based on the amount of ink used during the recommended ink maintenance routines comparing the HP Latex Ink printing system to certain eco-solvent ink systems.

⁹ Some substrates may have inherent odor.

¹⁰ HP image permanence and scratch, smudge, and water resistance estimates by HP Image Permanence Lab on a range of media including HP printing materials. See www.hp.com/go/supplies/printpermanence.

¹¹ Speed based on printing using full width 155 cm/61 in.

บริษัท บีพีเอส ยูไนเต็ด จำกัด

213 หมู่ 1 ถนนสุขสวัสดิ์ ตำบลปากคลองบางปลากด อำเภอบางพลี จังหวัดสมุทรปราการ 10290
T. 0-2816-3888, 0-2816-3999, 0-91818-2988-9 F. 0-2816-3838-9 www.bpsunited.com, www.facebook.com/bpsunited

