

Kongsberg C

The new dimension for digital finishing



The new dimension for digital finishing

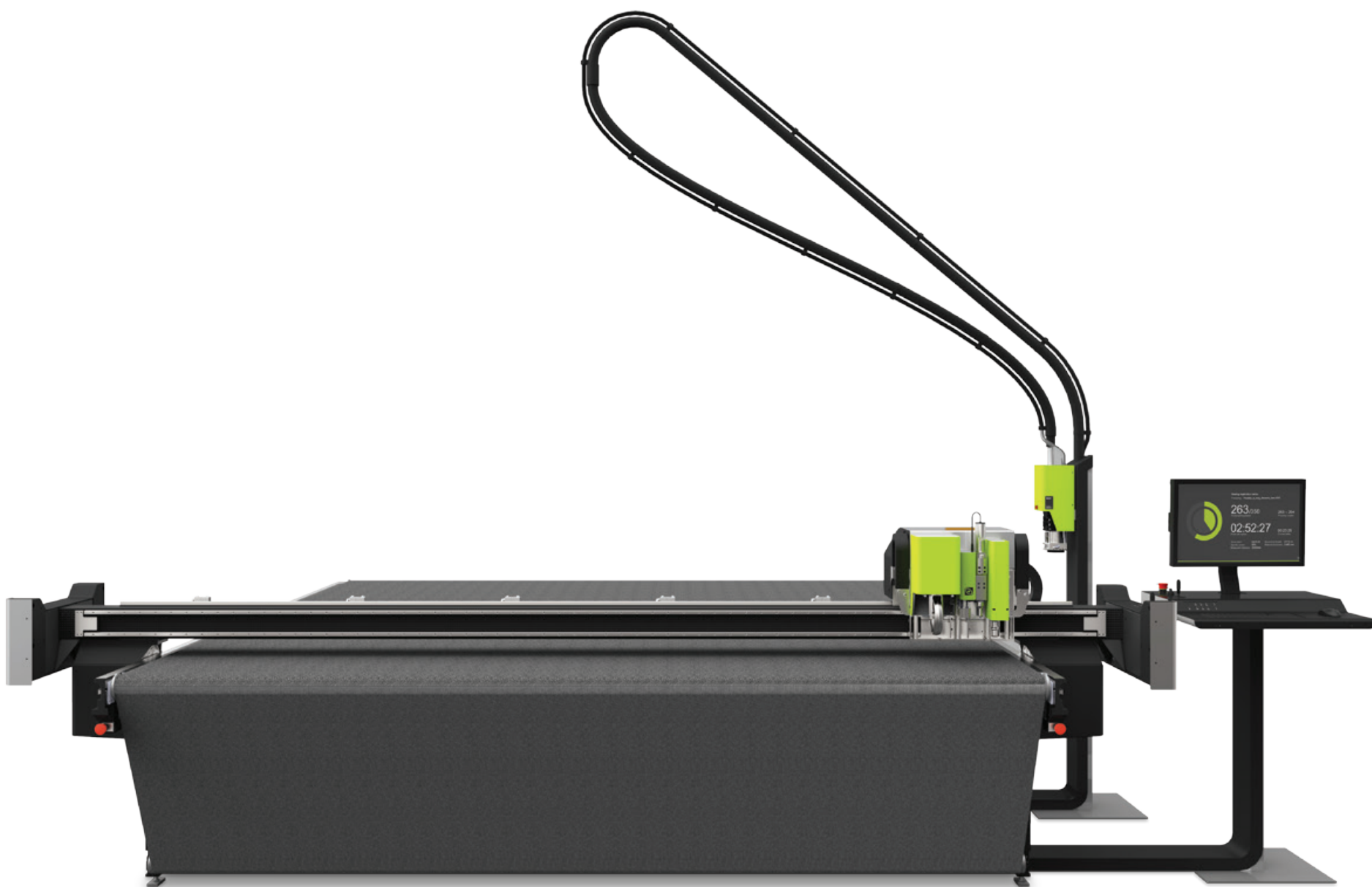
Your world has changed. It's a wide format world with higher volumes and faster turnaround times on a vast selection of materials.

It's time for a digital finishing solution that fits today's digital production requirements without compromising on size, versatility or finishing quality. The Kongsberg C series is the first multifunction super-wide digital finisher for signage, display and packaging applications.

Kongsberg C stands for:

- **Capability:** the Kongsberg C processes the widest variety of materials with an extensive range of applications. Paper, textiles, corrugated board up to triple-wall, honeycomb or fluted core board, plastics, aluminum composites, and more. The Kongsberg C series handles them all with ease.
- **Capacity:** it has the highest throughput of any super-wide digital finisher, period. The Kongsberg C series is the only super-wide finisher to offer a 3kW continuous duty high-performance milling unit.
- **Consistency:** the Kongsberg C series delivers the same performance every time, even on the most demanding materials or for the most complex jobs.
- **Choice:** there's no need any more to choose between size and productivity. The Kongsberg C offers both simultaneously; eliminating the need to own dedicated digital finishers for different applications.
- **Complete:** only Esko offers a full solution consisting of hardware, software, bits & blades, and services. The Kongsberg C series brings unmatched versatility with four "power" tool units and a full assortment "speed" tools. The table can be upgraded to fit your production needs as your business grows with additional tooling, a conveyer feed system, roll feeder unit, and more.





Kongsberg C

The Kongsberg C series is the first multifunction super-wide digital finisher for signage, display and packaging applications.

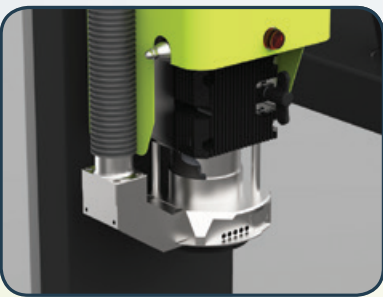


Carbon composite traverse

Thanks to the extreme rigidity of this material the traverse is uniquely capable of high speeds, accuracy and payload even with the most demanding materials.

High powered milling

The Kongsberg C series tables can be configured for milling applications that range from sporadic, light-duty routing to lengthy jobs working with heavy-duty materials — all with record breaking productivity.

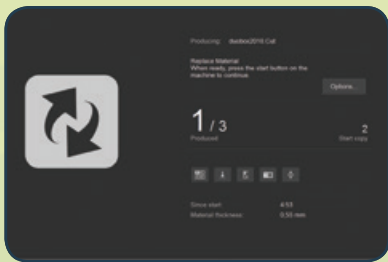


Tools

A complete set of advanced, quick change tools provides versatility, making it easy to set up the cutting table to process any material.

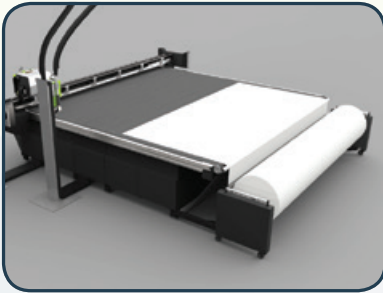
i-cut Production Console

The Kongsberg C is controlled by an all new front end. *i-cut* Production Console ensures highly efficient production with the most accurate print to cut registration available.



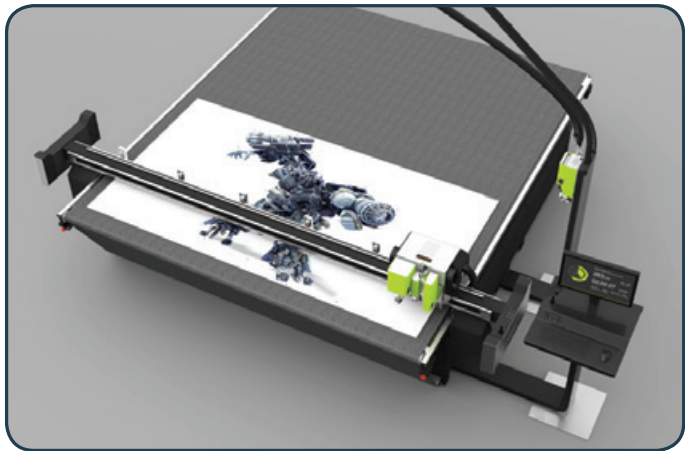
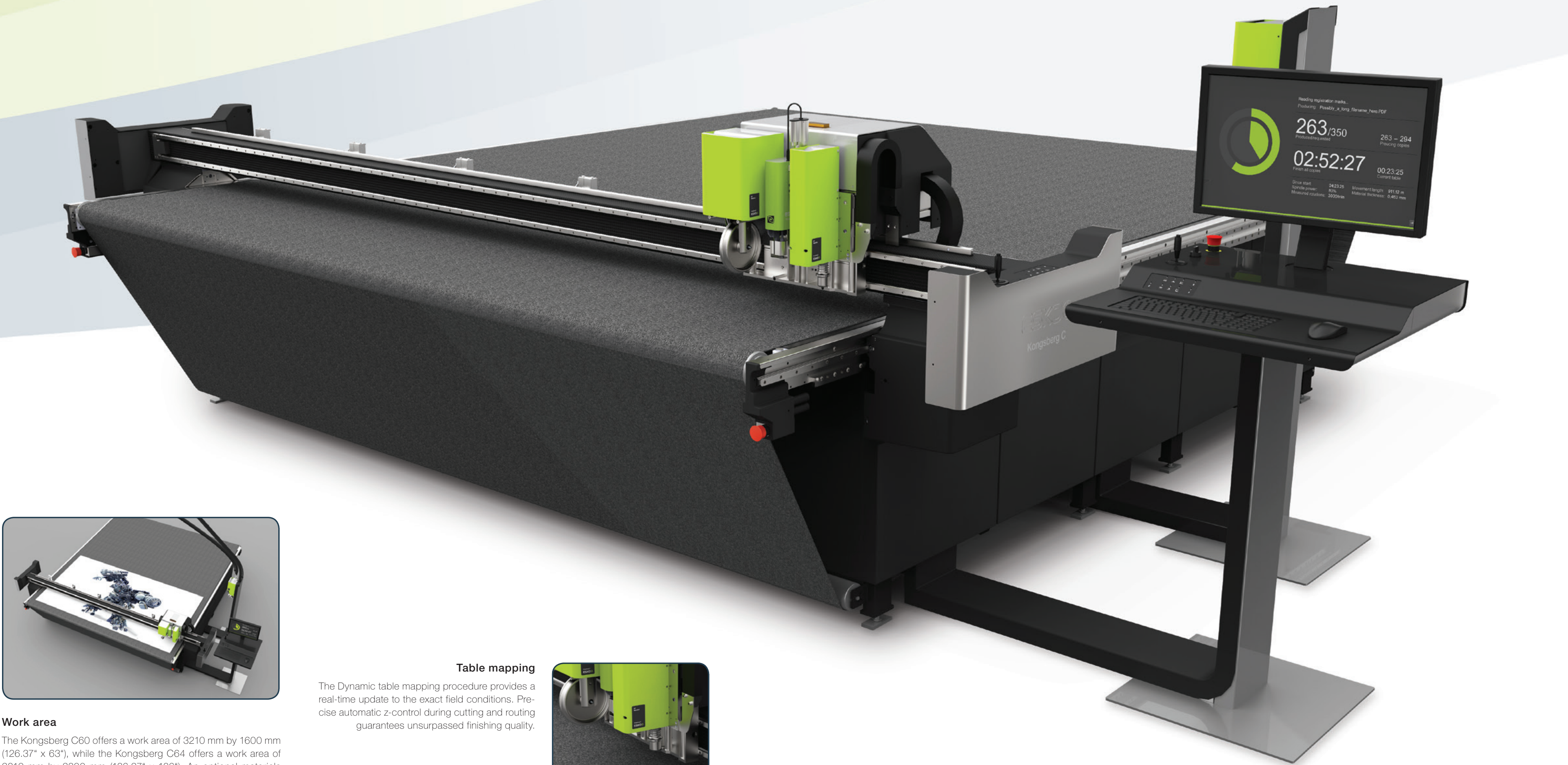
Speed and power on demanding materials

The Kongsberg C offers the raw strength required to process even the most rugged materials at high-production speeds.



Roll feeder

The Kongsberg C can be outfitted with a roll feeder for heavy duty rolls of materials like textile, vinyl,... up to 3330 mm or 131 in wide.



Work area

The Kongsberg C60 offers a work area of 3210 mm by 1600 mm (126.37" x 63"), while the Kongsberg C64 offers a work area of 3210 mm by 3200 mm (126.37" x 126"). An optional materials conveyor is available.

Table mapping

The Dynamic table mapping procedure provides a real-time update to the exact field conditions. Precise automatic z-control during cutting and routing guarantees unsurpassed finishing quality.



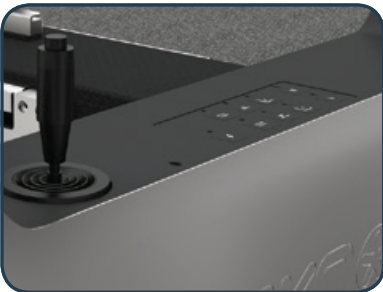
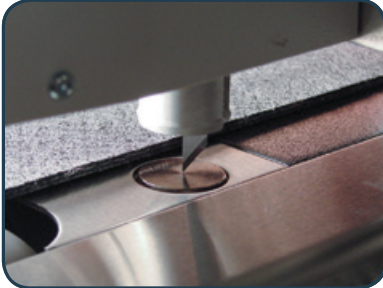
Down force

The Heavy Duty Tool Unit offers 500N / 110lbs of down force, sufficient to create even the most challenging materials.



Tool exchange

Tool, bit or blade exchange is fast and foolproof thanks to the integrated tool tip height sensor. It accurately and automatically calibrates the working depth for different tools and greatly contributes to simple operation.

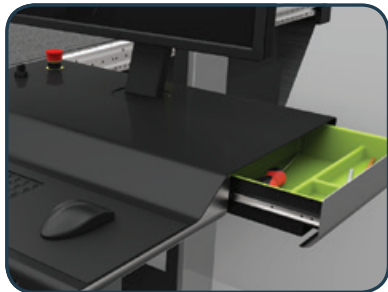


Auxiliary control panel

The new auxiliary control panel at the end of the traverse offers easy access for the operator, speeding up production.

Ergonomic design

The brand new workstation is designed with the focus on operator safety and ease of use.



Tool wagon

The optional tool storage wagon makes changing blades, bits and tool inserts very straightforward.

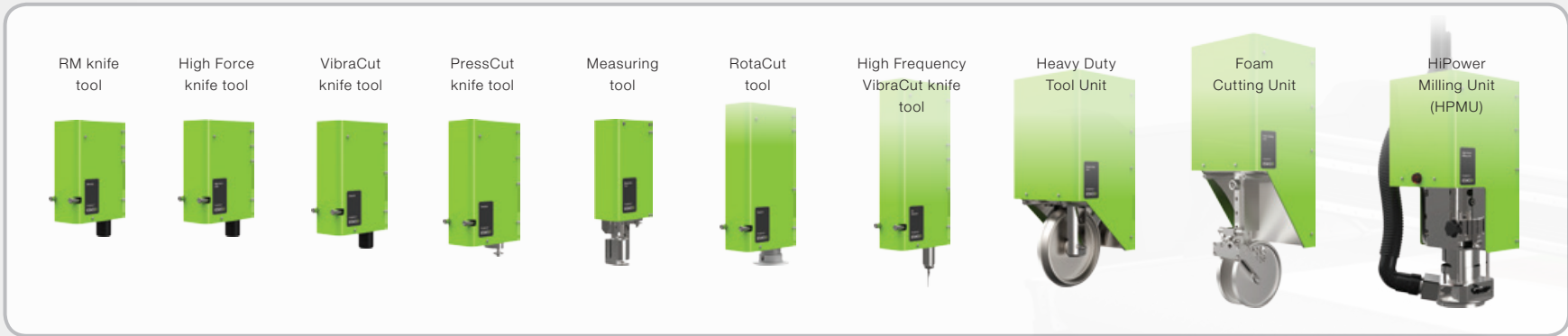


Rack-and-pinion drive system

Provides speed, durability and the brutal power required to drive through dense, thick material. The system offers great dynamic repeatability at heavy workloads.



Widest range of tools for all applications and all substrates



Kongsberg C performance parameters

| | Work area (width x length) | Max. material size | | Overall dimensions (including workstation) | Max. speed |
|-----|-----------------------------------|---------------------------------|-----------------------------------|---|------------------------|
| | | (without conveyor feed) | (with conveyor feed) | | |
| C60 | 3210 x 1600 mm 126.37 x 63 in | 3330 x 2125 mm 131 x 83.5 in | 3210 x 2125 mm 126.5 x 83.5 in | 5100 x 2320 mm 201 x 91.5 in | 100 m/min 66 in/sec |
| C64 | 3210 x 3200 mm 126.37 x 126 in | 3330 x 3730 mm 131 x 147 in | 3210 x 3730 mm 126.5 x 147 in | 5100 x 3920 mm 201 x 154.5 in | 100 m/min 66 in/sec |



บริษัท บีพีเอส ยูไนเต็ด จำกัด

213 หมู่ 1 ถนนสุขุมวิท ตำบลปากคลองบางปลากด อำเภอพระสมุทรเจดีย์ สมุทรปราการ 10290
T. 0-2816-3888, 0-2816-3999, 0-91818-2988-9 F. 0-2816-3838-9
www.bpsunited.com, www.facebook.com/bpsunited

